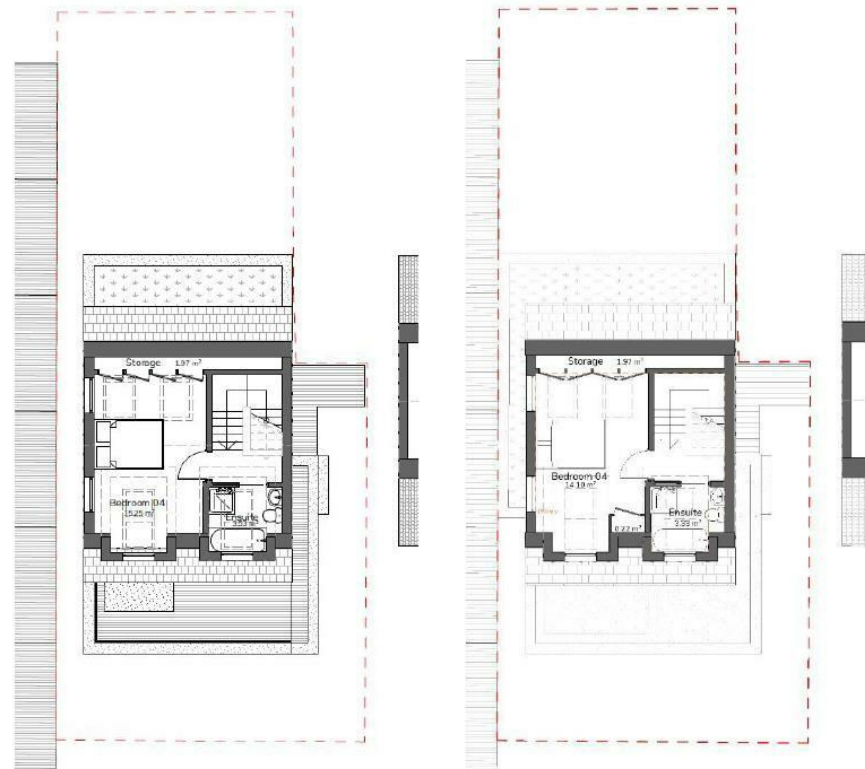


Second Floor Plan

Pre-Application



Proposed

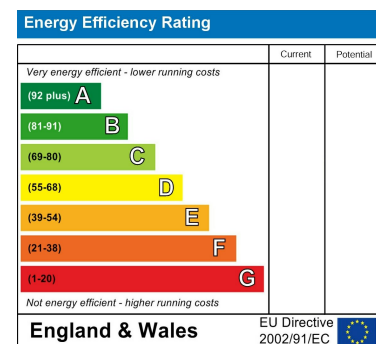
The second floor has a double bedroom with eaves storage and a bathroom. This space benefits from two front-facing dormer windows and skylights to enhance natural daylight.

25

Council Tax Band

New Build

Energy Performance Graph



Call us on

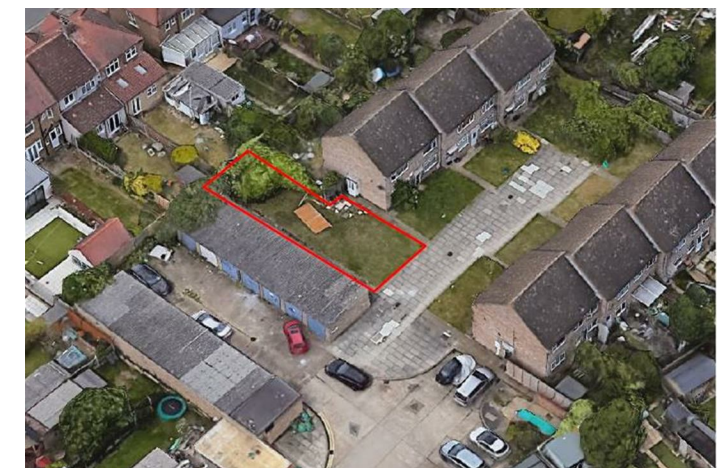
02081 501577

Sales@citymize.com
citymize.com

Agents Note: Whilst every care has been taken to prepare these particulars, they are for guidance purposes only. All measurements are approximate and are for general guidance purposes only and whilst every care has been taken to ensure their accuracy, they should not be relied upon and potential buyers are advised to check the measurements.



FREEHOLD



LAND (EPC RATING:)

LAND HOWELL CLOSE, CHADWELL
HEATH, ROMFORD, ESSEX, RM6 5UL
OFFERS IN EXCESS OF

£180,000



0 Bedroom Land located in Romford

Guide price : £190,000-£210,000
Nestled in the sought-after area of Howell Close, Chadwell Heath, Romford, this exceptional piece of land offers a unique opportunity to build your dream home. Spanning an impressive 1,750 or 165 square meters, this plot is conveniently located on the west side of Howell Close and already has planning permission for a stunning four-bedroom detached house. Ideal for Investor, Developer.

Ready for immediate construction, all necessary utilities have been ordered, ensuring a seamless transition from planning to building. Situated in a prime location, this land provides easy access to a range of local amenities, including schools and transport links, making it perfect for families and commuters alike.

Imagine designing a home tailored to your specific needs in a vibrant community that offers both tranquility and accessibility. With the potential for a stylish and comfortable residence, this land is a rare find in this sought-after area. Don't miss the chance to create your bespoke living space in Chadwell Heath, where you can enjoy the best of suburban life while still being well-connected to the bustling heart of Romford and beyond.

For further details, the planning permission number and land registry information will be provided upon request. Don't miss out on this fantastic opportunity to build your dream home in Chadwell Heath! Arranged a viewing now.

Planning permission for detached 4 bed room House

Nestled in the sought-after area of Howell Close, Chadwell Heath, Romford, this exceptional piece of land offers a unique opportunity to build your dream home. Spanning an impressive 1,750 or 165 square meters, this plot is conveniently located on the west side of Howell Close and already has planning permission for a stunning four-bedroom detached house. Ideal for families in search of a spacious and modern living environment.

Ready for immediate construction, all necessary utilities have been ordered, ensuring a seamless transition from planning to building. Situated in a prime location, this land provides easy access to a range of local amenities, including schools and transport links, making it perfect for families and commuters alike.

Imagine designing a home tailored to your specific needs in a vibrant community that offers both tranquility and accessibility. With the potential for a stylish and comfortable residence, this land is a rare find in this sought-after area. Don't miss the chance to create your bespoke living

space in Chadwell Heath, where you can enjoy the best of suburban life while still being well-connected to the bustling heart of Romford and beyond.

For further details, the planning permission number and land registry information will be provided upon request. Don't miss out on this fantastic opportunity to build your dream home in Chadwell Heath! Arranged a viewing now.

permission number : Red bridge : 1791/24
For further details, the planning permission number and land registry information will be provided upon request. Don't miss out on this fantastic opportunity to build your dream home in Chadwell Heath! Arranged a viewing now.

permission number : Red bridge : 1791/24

